

Engine	Weichai WD10G178E25
Gross Power	128 kW (174 hp) @ 1,850 rpm
Net Power	120 kW (163 hp) @ 1,850 rpm
Maximum Torque	830 N · m
Blade Capacity	4.5 m <sup>3</sup>
Operating Weight	17,000 kg

# B160C BULLDOZER



TOUGH WORLD. TOUGH EQUIPMENT.

# B160C SPECIFICATIONS >>>

## ENGINE

Emission Regulation	Tier 2 / Stage II
Make	Weichai
Model	WD10G178E25
Gross Power	128 kW (174 hp) @ 1,850 rpm
Net Power	120 kW (163 hp) @ 1,850 rpm
Peak Torque	830 N · m @ 1,000-1,200 rpm
Number of Cylinders	6
Aspiration	Turbocharged
Displacement	9.726 L

## TRANSMISSION

Transmission Type	Power shift
Maximum Travel Speed, fwd	10.6 km/h
Maximum Travel Speed, rev	13.6 km/h
Number of Speeds, fwd	3
Number of Speeds, rev	3

## ELECTRICAL SYSTEM

System Voltage	24 V
----------------	------

## UNDERCARRIAGE

Shoe Width	510 mm
Number of Shoes per Side	37
Number of Upper Rollers per Side	2
Number of Bottom Rollers per Side	6
Shoe Ground Pressure	67 kPa
Track on Ground	2,430 mm

## DIMENSIONS

Overall Length	6,510 mm
Height to Top of Cab	3,200 mm
Ground Clearance	400 mm

## OPERATING WEIGHTS

Operating Weight	17,000 kg
------------------	-----------

## BLADE PERFORMANCE

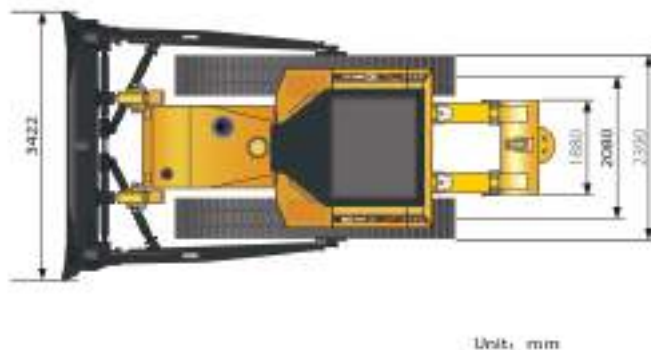
Blade Type (referenced)	straight
Blade Capacity (referenced)	4.5 m <sup>3</sup>
Blade Width	3,388 mm
Blade Height	1,149 mm
Blade Depth below Ground	540 mm
Blade Lift above Ground	1,076 mm
Blade Tilt (left)	445 mm
Blade Tilt (right)	470 mm

## HYDRAULIC SYSTEM

Flow	224 L/min
Pressure	14 MPa
Pump	Gear pump
Cylinders	Dual-acting piston type

## SERVICE CAPACITIES

Fuel Tank	350 L
Engine Oil	24 L
Cooling System	40.5 L
Hydraulic System Total	108 L
Transmission and Torque Converter	122 L
Final Drives, each	66 L



Unit: mm

## Guangxi Liugong Machinery Co., Ltd.

No. 1 Liutai Road, Liuzhou, Guangxi 545007, PR China  
T: +86 772 3886124 E: overseas@liugong.com  
www.liugong.com

02/2018 Designed by LiuGong

Specifications and designs are subject to change without notice. Machines shown may include optional equipment. LiuGong standard and optional equipment may vary from region to region. Please consult your LiuGong dealer for information specific to your area.